

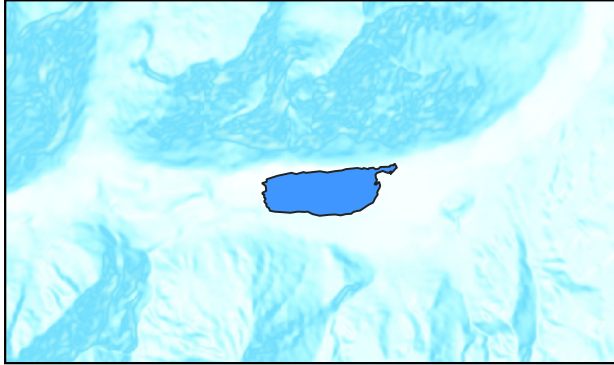
# Evolution of the coastline of Lyell Lake

By Zade Viggers

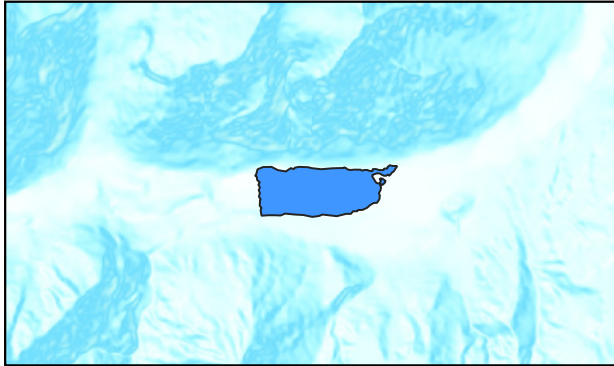
0 1,000 2,000 m



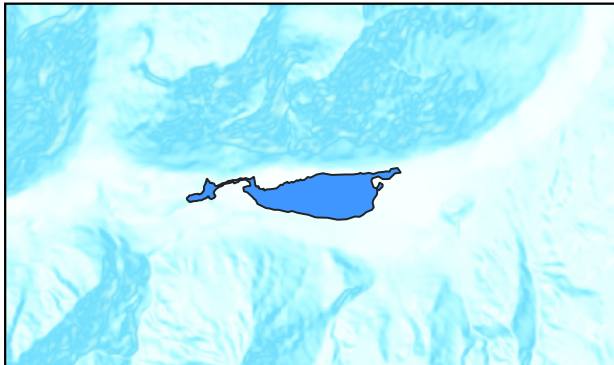
**1965**



**1982**



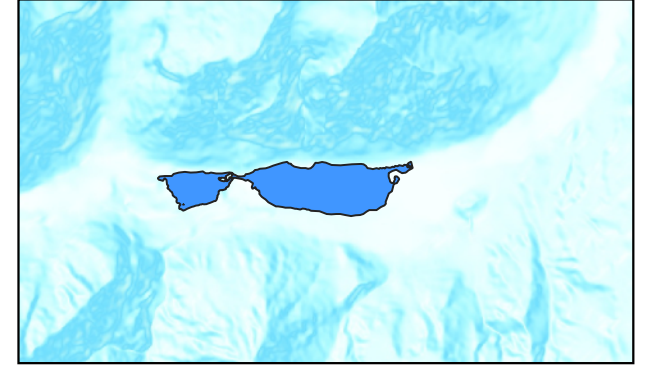
**2007**



**2010**



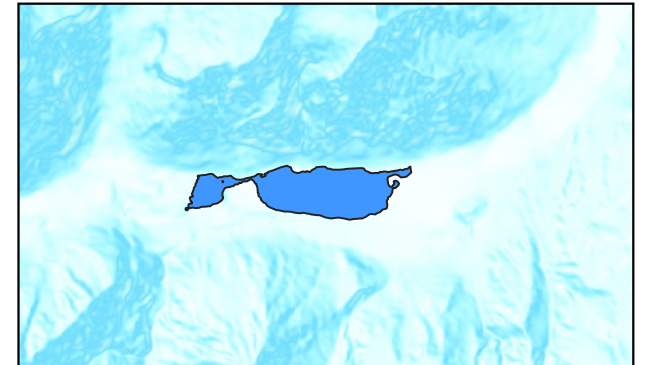
**2024**



**2018**



**2013**



Lyell Lake is located to the east of Lyell Glacier, in New Zealand's Southern Alps. Lyell Glacier, the main source of meltwater for Lyell Lake, was first observed in 1862 by Dr. von Haast. The lake is also fed with meltwater from Cockayne Glacier.

Between 2000-2013, Lyell Glacier retreated some 400m, and an auxiliary lake began forming to the west, as the Glacier retreated beyond the current extent of Lyell Lake.

This ongoing change reflects broader environmental shifts in the Southern Alps, where the consistently increasing retreat of glaciers is a clear demonstration of the impacts of global climate change.

The progression of Lyell Lake's expansion can be clearly seen in this series of maps spanning several decades. Each image highlights the growing influence of glacial meltwater from the ongoing retreat of the Lyell and Heim Glaciers.

